

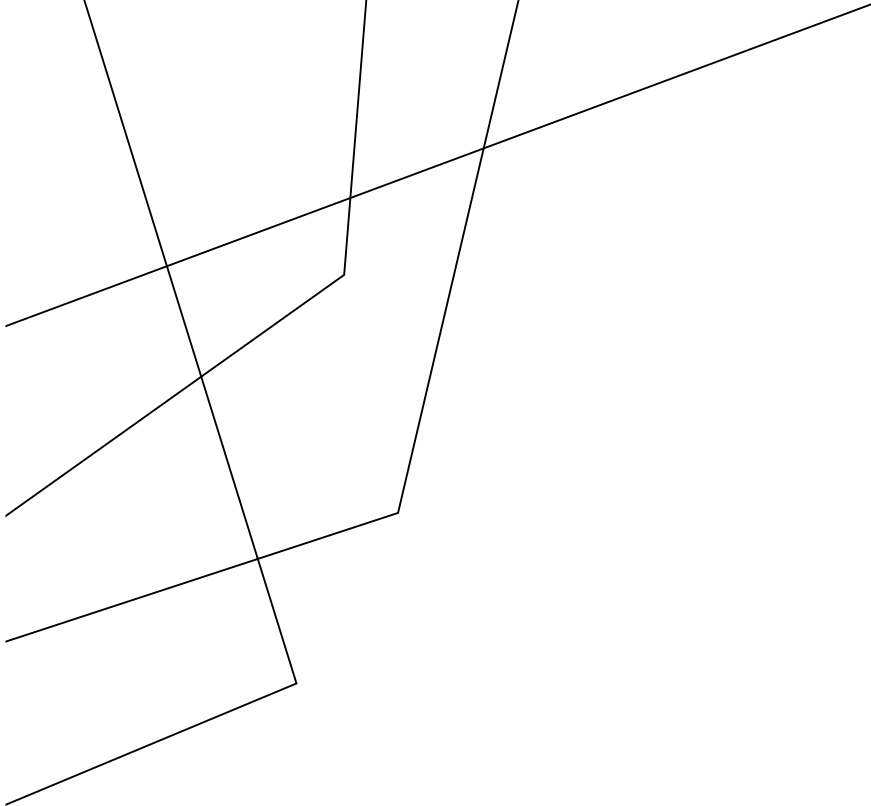
The top left corner of the slide features a series of overlapping, thin black lines that form various geometric shapes, including triangles and polygons, creating a complex, abstract pattern.

THE PROMPT WRANGLER

AI TEXT-TO-IMAGE GENERATION AS CURATORIAL PRACTICE

Mitch Goodwin | University of Melbourne

#SlowDownTime | EVA – Berlin, 2023



The reason I'm painting this way is that I want to be a machine.

- **Andy Warhol**, *ARTnews*, 1963

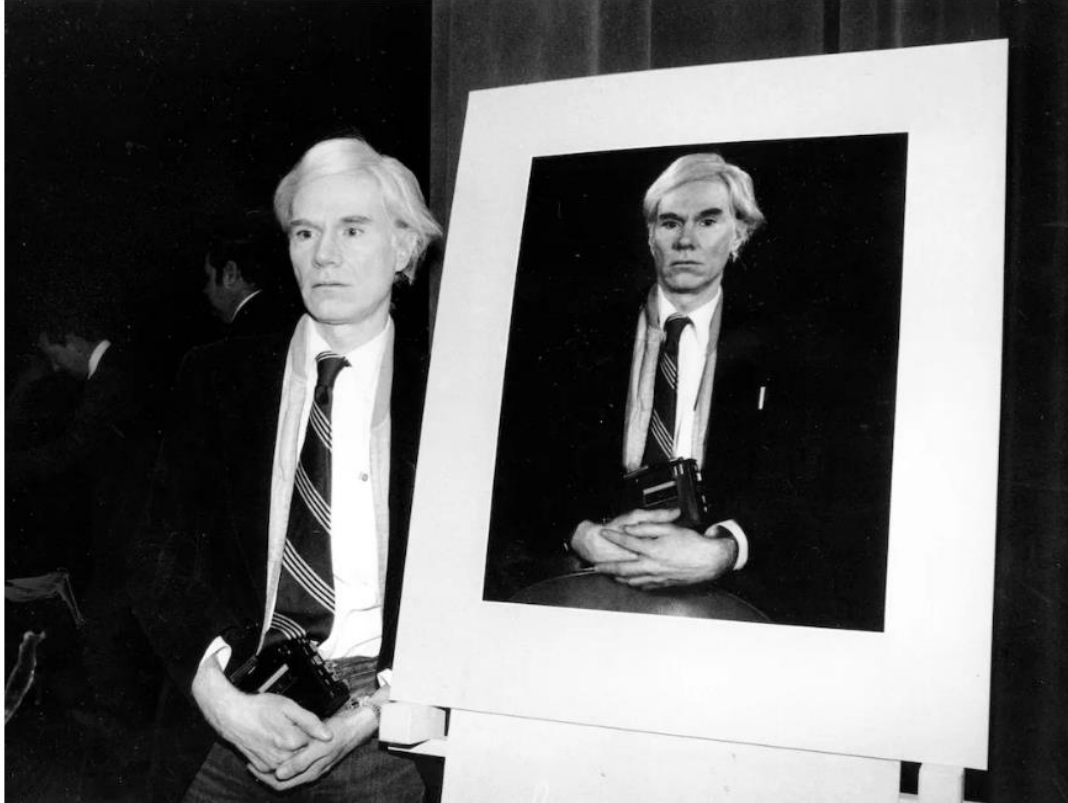
ARTnews

home · artnews · news

AI-Generated Andy Warhol to Narrate New Netflix Documentary Series

BY ALEX GREENBERGER February 24, 2022 11:24am

f t v p +



Andy Warhol.
ASSOCIATED PRESS



Blues and jazz musicians have long been enabled by a kind of “open source” culture, in which pre-existing melodic fragments and larger musical frameworks are freely reworked. Technology has only multiplied the possibilities

Johnathan Lehman “The Ecstasy of Influence: A Plagiarism,” [*Harper’s Magazine*](#), February 2007

Beta test image *Michael Jackson Alien Thriller* by Midjourney & Goodwin (2022-07-14)



Can art be prophetic in the sense that it predicts scientific and technological revolutions that have not yet happened?

Daniel Birnbaum, *More Than Real: Art in the Digital Age*, 2018, pp25

Haslem, W., Goodwin, M. & Midjourney, "[Wendy Haslem – For Patti](#)," in *Slow Down Time*, Goodwin, M. Ed. Melbourne: Word Press, December 1, 2022,



DALL-E variation of an image from a dataset of photographs by Romanian photographer Costică Acșinte, by [Eryk Salvaggio](#).



From the series, '*Stage designs for an unwritten play*' by Lev Manovich /MidJourney/Facebook.

**THE LESSON I HAVE
LEARNED THE MOST IS
THAT WORDS ARE SPELLS.
IF I DIDN'T KNOW IT
BEFORE, I KNOW IT NOW
FOR SURE.**

Tessa Parks "And Those Who Were Seen Dancing,"
[Bandcamp](#), May 20, 2022



Beta test image *Johnny & Mary* by Midjourney & Goodwin (2022-07-18) Lyrics by Robert Palmer (1980)

**A COLLABORATION
THAT ITERATES FIDELITY
FROM THE NOISE WITHIN**



Early test image, '*A rose is a rose is a rose*' by Midjourney & Goodwin (2022-07-26).



CONTEMPLATION

Do contemplative practices make the opaque operations of LLMs more relatable?

DECONSTRUCTION

How does adopting literary devices impact production and reception of text-image generative AI?

DOCUMENTATION

What is being preserved by curating human-machine dialogues within a finite period of a technology's rapid development?

PRESENTATION

By framing the machine compositions in exhibition and symposia contexts important questions emerge around creative authorship, cultural heritage, data integrity and the means of (media) production in the age of AI.

CURATORIAL CONSIDERATIONS

THE LONELINESS ROOM

A single boat floats

Blue ripples surround the oars

Loneliness can be so still

Prompt by **Sean Redmond**

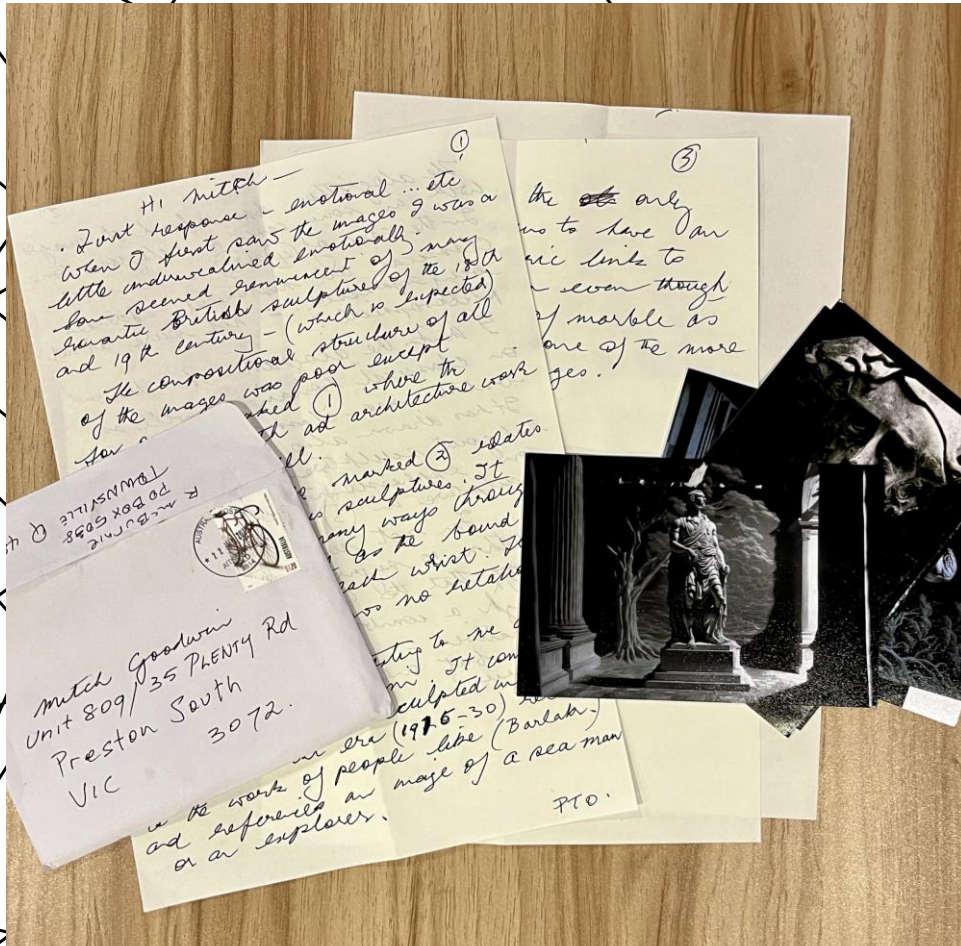


Redmond, S., Goodwin, M. & Midjourney, "Sean Redmond – The Loneliness Room," in *Slow Down Time*, Goodwin, M. Ed. Melbourne: Word Press, December 1, 2022, <http://slowdowntime.com/sean-redmond-2/>

SLOW A.I. CONTEMPLATION

Each step in the journey a deliberate measure to slow down time:

- i. **Crafting** of the prompt by the authors
- ii. **Production** of image variations (often over many hundreds of generations)
- iii. **Curation** of the final collection of thirty-three image series
- iv. **Printing** of the selected images as a set of photographic prints
- v. **Receivership** by the authors of their image series in the mail (postal service)
- vi. **Response** by the authors to the generated images as tactile media objects (photographic prints)
- vii. **Archiving** of the images, meta data and the dialogue exchange with the authors



Handwritten response from artist Ron McBurnie to images from his series, [Newton](#).



Is there some form of contemplation or sub-text at work within the algorithmic black-box as it blitzes through its trove of cultural fragments?

Gardner, R., Goodwin, M. & Midjourney, "[Ruth Gardner – Metro Bots](#)," in *Slow Down Time*, Goodwin, M. Ed. Melbourne: Word Press, May 1, 2023,

THE ARCHIVE

SLOW DOWN TIME



Edition 35C-A3 from the "The Net" series by Geert Lovink Midjourney Job ID # 7e78732e-4109-447b-8dcb-9d55298b734b

Edition: 01-D2CE

Reality Check

Text prompt

How do I know if this is real?

Parameters

-test -creative



Midjourney Job ID

d30b195d-5216-46b9-848b-
d54e2086f589

Prompt Author

Jennifer Perkin

Discord Message Link

<https://discord.com/channels/1026708709830836236/1026708712368377982/1027447165599105024>

Date Commenced

04.10.22

Perkin, J., Goodwin, M. & Midjourney, “Jennifer Perkin – Reality Check,” in *Slow Down Time*, Goodwin, M. Ed. Melbourne: Midjourney, Discord, Word Press, December 2, 2022, <http://slowdowntime.com/jennifer-perkin-2/>

Edition: 09-B2B

Future Imperfect

Text prompt

The future of architecture

Parameters

-ar 2:3 -v 4 (beta)

Photo prompt



Parent grid



Midjourney Job ID #

a178ed72-5e38-445a-97f4-
b89225ecd613

Prompt Author

Adam Brown

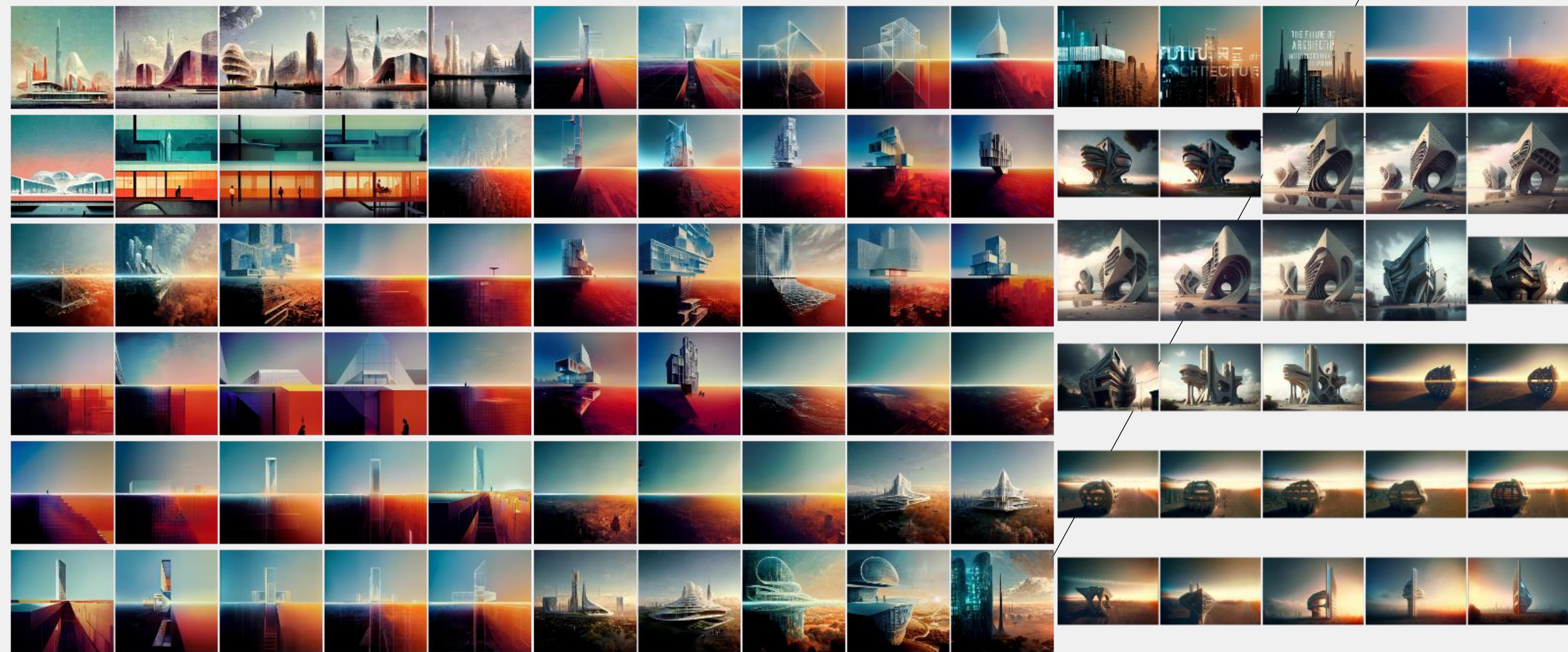
Discord Message Link

<https://discord.com/channels/1026653306170376273/1026653307118301349/1050222285811884103>

Date Commenced

22.09.22

Brown, A., Goodwin, M. & Midjourney, Edition 09-B2B from “Adam Brown – Future Imperfect,” in *Slow Down Time*, Goodwin, M. Ed. Melbourne: Midjourney, Discord & Word Press, December 6, 2022, <http://slowdowntime.com/adam-brown/>



Brown, A., Goodwin, M. & Midjourney, "Adam Brown – Future Imperfect," in *Slow Down Time*, Goodwin, M. Ed. Melbourne: Midjourney, Discord & Word Press, December 6, 2022, <http://slowdowntime.com/adam-brown/>

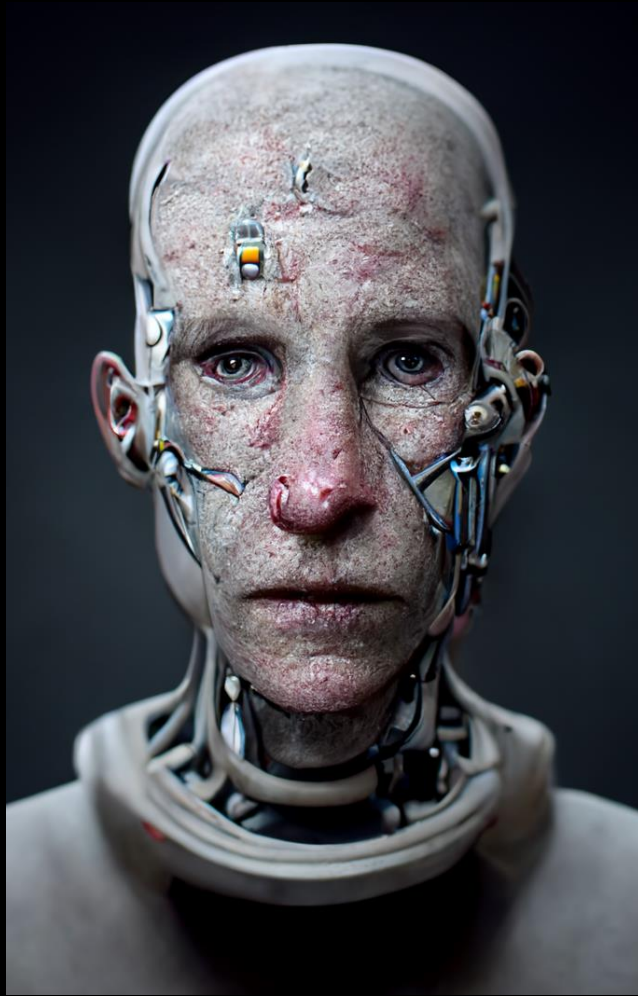
ARCHIVE DATA TYPE 01 – CLIMATE CRISIS



Brown, A., Goodwin, M. & Midjourney, Edition **04-D2C** and Edition **09-B2B** from “Adam Brown – Future Imperfect,” in *Slow Down Time*, Goodwin, M. Ed. Melbourne: Midjourney, Discord & Word Press, December 6, 2022, <http://slowdowntime.com/adam-brown/>



Carey, J., Goodwin, M. & Midjourney, "[James Carey – 3AM](#)," in *Slow Down Time*, Goodwin, M. Ed. Melbourne: Word Press, December 6, 2022,



Early test image, '[Cyborg Cowboys](#)' portrait series by Midjourney & Goodwin (2022-07-27).



Early test image, '[View from Above](#)' by Midjourney & Goodwin (2022-07-21).



Lovink, G., Goodwin, M. & Midjourney, "[Geert Lovink – Sad by Design](#)" in *Slow Down Time*, Goodwin, M. Ed. Melbourne: Word Press, April 17, 2023,



Motiekaitis, L., Motiekaitis, K., Goodwin, M. & Midjourney, "[Lani & Kitty Motiekaitis – Mirror Moon](#)," in *Slow Down Time*, Goodwin, M. Ed. Melbourne: Word Press, December 2, 2022,



Noordenburg, HV., Goodwin, M. & Midjourney, "[Henri van Noordenburg – Inferno](#)," in *Slow Down Time*, Goodwin, M. Ed. Melbourne: Word Press, February 19, 2023,

DYSTOPIAN VISIONS

“The cyberpunk rhetoric is coming to a head as we create and legislate for the foundational AIs – the AIs that will make other AIs. Now is a critical moment to consider the priorities we program in, rather than fearfully assume the worst because it's the only idea we're aware of.”

Freyja Sewell, *If everyone believes the future is dystopian, could that cause us to make it dystopian?*, Dezeen, June 21, 2023



Edition 15-A3 from the “Bots” series by Ruth Gardner
Midjourney Job ID #b02d5a83-e06d-47da-a4c5-30c6acf76fcc



Edition: 07B-A2FB

Dreams

Text prompt

What did you dream?
It's alright, we told you what to dream.

Source

Pink Floyd, 'Welcome to the Machine' from the 1975 album *Wish You Were Here*, EMI, UK

Context parameters

In the style of Omni Magazine, 1981

Parameters

-ar 3:2

Parent image



MidJourney Job ID :: 4d1f44b7-9adf-45d2-9b0c-eb9a02c9b535

Midjourney Job ID

bfab3e6f-bbdd-4338-994f-0239c9f31590

Prompt Author

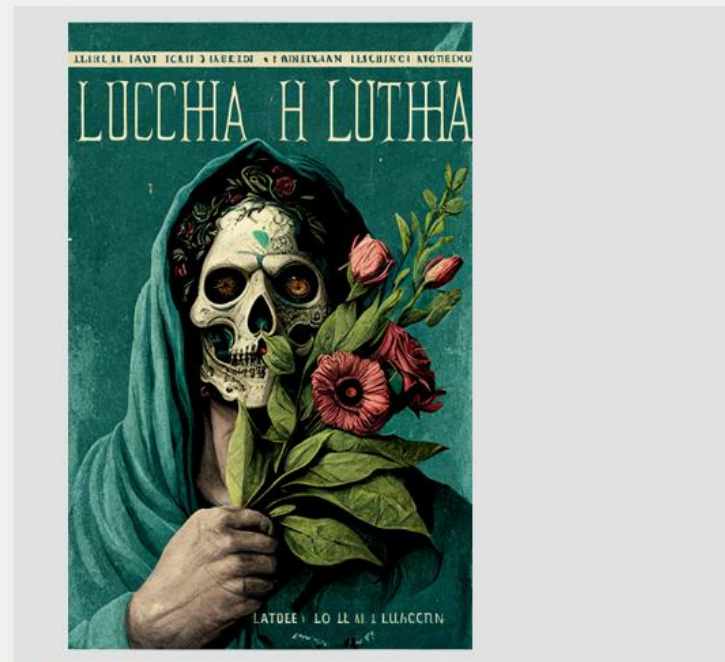
Geert Lovink

Discord Message Link

<https://discord.com/channels/1044910691729023096/1044910692202971190>
[/1077076845746458705](https://discord.com/channels/1077076845746458705)

Date Commenced

23.11.22



Edition: 06-A3BB

Colectivo

Text prompt

La lucha es un poema colectivo
(Resisting is a collective poem)

Context parameters

NA

Parameters

-ar 2:3 -v 4 -chaos 100

Parent grid



MidJourney Job ID :: 6f8a682-3f32-4b23-b85c-ca400f4905f6

Midjourney Job ID

f8aa682-3f32-4b23-b85c-ca400f4905f6

Prompt Author

Raul Porras

Discord Message Link

<https://discord.com/channels/7026654059199828490/702665405729893795>
[/70218072294407436](https://discord.com/channels/70218072294407436)

Date Commenced

23.10.22



Edition: 13-A2E

Siberia 2032

Text prompt

A decaying Siberian city in 2032 after a 10 year long war damaged the country, winter 10am light, dramatic sky, matte painting trending on ArtStation HQ

Context parameters

NA

Parameters

-ar 16:9 -v 1

Parent grid



MidJourney Job ID :: c8a36e9b-fc37-4512-bc88-46f78abc2509

Midjourney Job ID

c73129de-4964-43df-bf6a-fb5b772bb1b2

Prompt Author

Lev Manovich

Discord Message Link

<https://discord.com/channels/1049517107206946847/1049517107206946851/1111147942594756668>

Date Commenced

31.01.23



Edition: 06-A4DC

Fashion 2100

Text prompt

If I was diagnosed 'mad' in the year 2100, what would I be wearing? Where would I be? Who would surround me?

Context parameters

Futurism in the Anthropocene. Mixed-media, wearable art, artist impression

Parameters

-ar 16:9 -c 100 -test -creative

Parent grid



MidJourney Job ID :: 3af5cc58-0b4d-4e2b-8929-d47a38a9789d

Midjourney Job ID

91f7cdfd-d8c6-4ea2-b79d-83dc2b64b51d

Prompt Author

Sarah Mace-Dennis

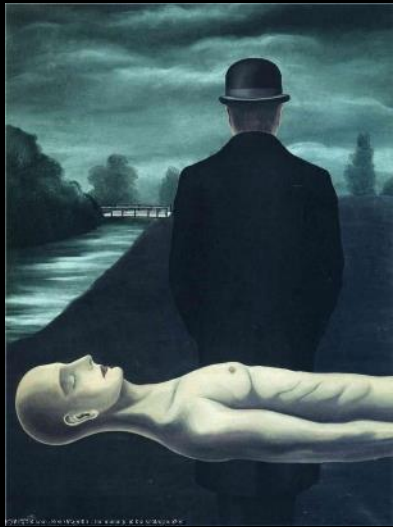
Discord Message Link

<https://discord.com/channels/1069754597029199922/1069754597855473686/1079269147852156928>

Date Commenced

31.01.23

WHERE DOES THE MELANCHOLIA COME FROM?



The Musings of a Solitary Walker

Magritte - 1926



The Weeping Woman

Picasso - 1937



“The Helmet”

Beksiński - 1985



Darth Vader

Lucasfilm - 2015



The Last Selfie on Earth

Scott Detweiler - 2022

GEN-AI ART

THE LAST SELFIE ON EARTH

Scott Detweiler, 2022



THE RETRO-FUTURE DOOM SCENE



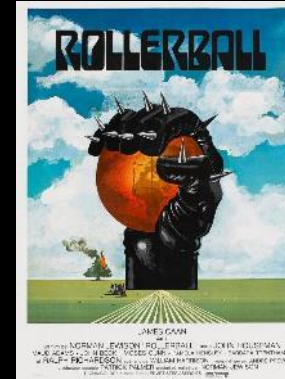
2001: A Space Odyssey

1968 → 2001



Soylent Green

1973 → NYC, 2022



Rollerball

1975 → Houston, 2018



Escape from New York

1981 → NYC, 1997



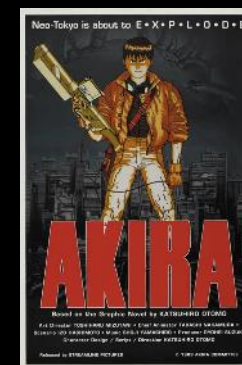
Blade Runner

1982 → Los Angeles, 2019



The Running Man

1987 → USA, 2017



Akira

1988 → Tokyo, 2019



Back to the Future II

1989 → California, 2015

GEN-A.I. HUMANITY

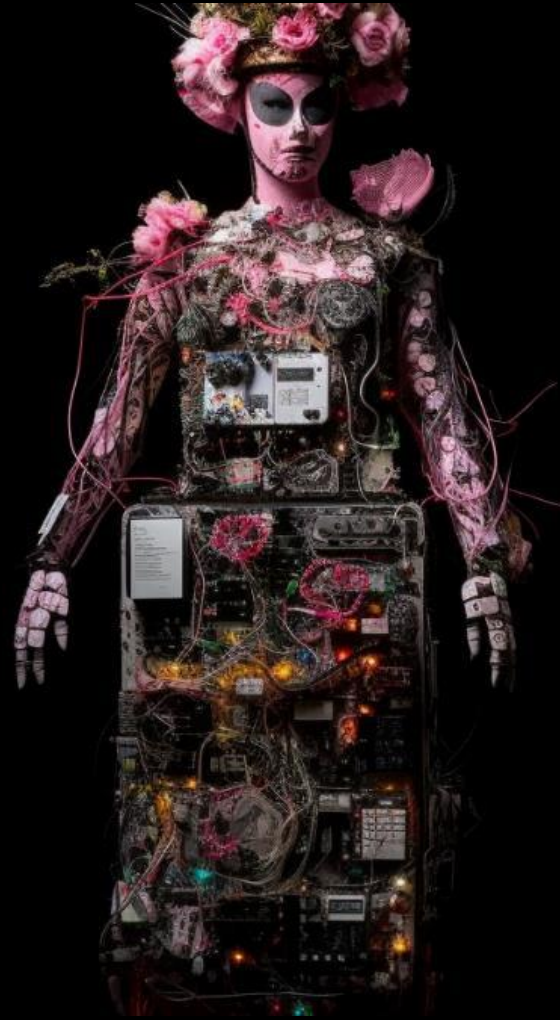


For thousands of years, we humans basically lived inside the dreams and fantasies of other humans. We have worshiped gods. We pursued ideals of beauty. We dedicated our lives to causes that originated in the imagination of some human poet or prophet or politician. Soon, we might find ourselves living inside the dreams and fantasies of an alien intelligence. And the danger that this poses ... are fundamentally very, very different from everything or most of the things imagined in science fiction movies and books.

- **Yuval Harari**, *AI and the Future of Humanity*,
[Frontiers Forum](https://www.yuvalharari.com/ai-and-the-future-of-humanity-yuval-noah-harari-at-the-frontiers-forum/), May 14, 2023

Image Credit - <https://www.yuvalharari.com/ai-and-the-future-of-humanity-yuval-noah-harari-at-the-frontiers-forum/>

Prompt :: If I was diagnosed 'mad' in the year 2100, what would I be wearing? Where would I be? Who would surround me?



2023



is, SM., Goodwin, M. & Midjourney, "Sarah-Mace Dennis – Fashion 2100,"
Slow Down Time, Goodwin, M. Ed. Melbourne: Word Press, April 17, 2023,
<http://slowdowntime.com/sarah-mace-dennis/>

SLOW DOWN TIME

26

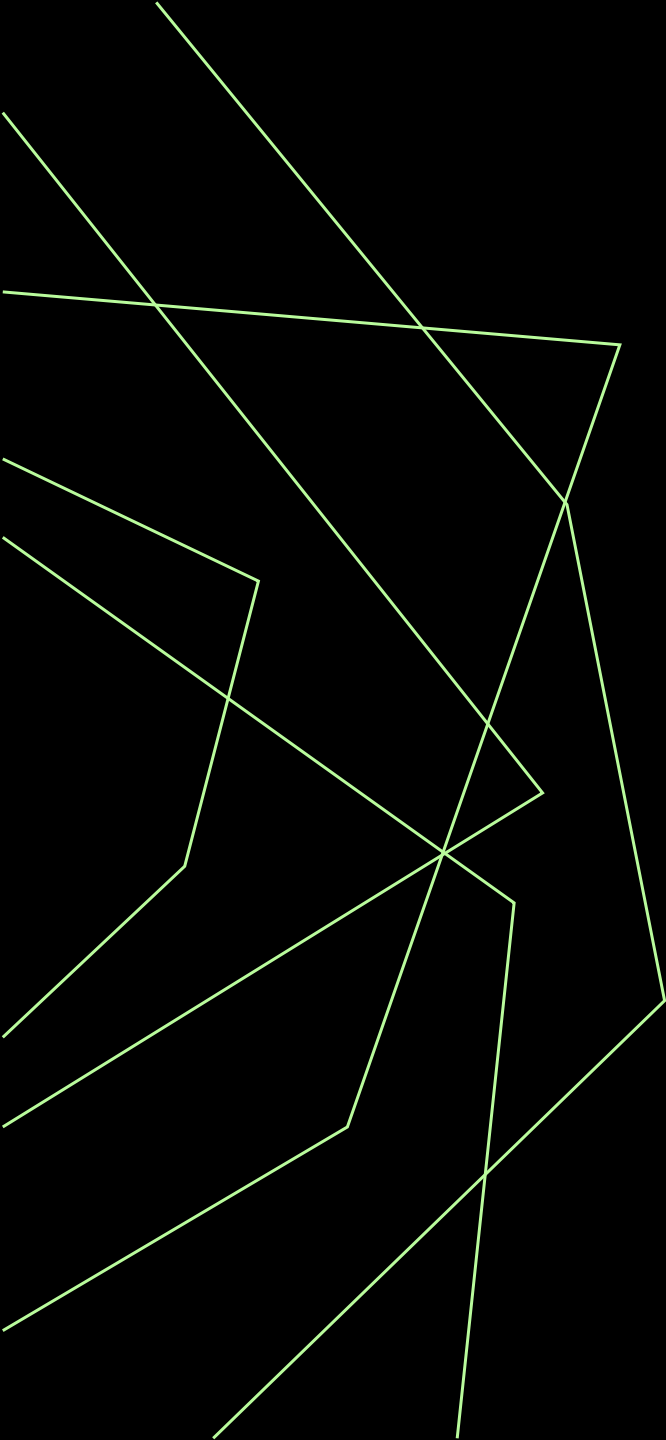
Prompt 01 :: Is it our nature as a virus in clothes to make cities and internets of ineffable complexity?

Prompt 02 :: Our present can at times seem wider than history is deep



Lowry, S., Goodwin, M. & Midjourney, "Sean Lowry – Complexity & History," in *Slow Down Time*, Goodwin, M. Ed. Melbourne: Word Press, April 17, 2023, <http://slowdowntime.com/sean-lowry/>

Prompt :: When I meet him in different cities we exit hotels separately, waiting, a few beats between lifts.



Breen, S., Goodwin, M. & Midjourney, "Sally Breen – Feel It," in *Slow Down Time*, Goodwin, M. Ed. Melbourne: Word Press, April 17, 2023, <http://slowdowntime.com/sally-breen/>

Prompt :: A decaying Siberian city in 2032 after a 10-year long war damaged the country, winter 10am light, dramatic sky, matte painting



Manovich, L., Goodwin, M. & Midjourney, "Lev Manovich – Still Life," in *Slow Down Time*, Goodwin, M. Ed. Melbourne: Word Press, May 22, 2023, <http://slowdowntime.com/lev-manovich/>

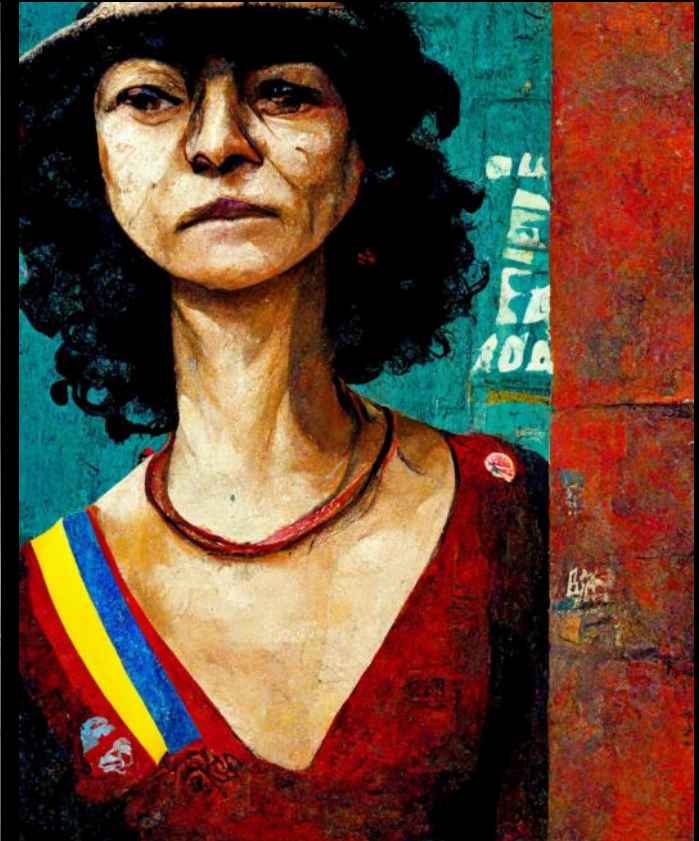
Prompt :: The Earth reflected in a giant mirror installed on the surface of the moon



Motiekaitis, L., Motiekaitis, K., Goodwin, M. & Midjourney, "Lani & Kitty Motiekaitis – Mirror Moon," in *Slow Down Time*, Goodwin, M. Ed. Melbourne: Word Press, December 2, 2022, <http://slowdowntime.com/lani-motiekaitis-2/>

Prompt 01 :: No tomes el agua (Don't drink the water)

Prompt 02 :: La lucha es un poema colectivo (Resisting is a collective poem)



Posse, R., Goodwin, M. & Midjourney, "Raul Posse – Colectivo & El Agua," in Slow Down Time, Goodwin, M. Ed. Melbourne: Word Press, April 17, 2023, <http://slowdowntime.com/raul-posse/>

Prompt :: Teleporting through Smart Plants™



Aayeshah, W., Goodwin, M. & Midjourney, "Wajeehah Aayeshah – Smart Plants," in Slow Down Time, Goodwin, M. Ed. Melbourne: Word Press, December 6, 2022, <http://slowdowntime.com/wajeehah-aayeshah>

Prompt :: I hope the bots can work it out



Aayeshah, W., Goodwin, M. & Midjourney, "Wajeehah Aayeshah – Smart Plants," in Slow Down Time, Goodwin, M. Ed. Melbourne: Word Press, December 6, 2022, <http://slowdowntime.com/wajeehah-aayeshah>

EMERGENT PATTERNS

CASE STUDIES

FUTURE IMPERFECT

Adam Brown



PROMPT
The future of architecture

Brown, A., Goodwin, M. & Midjourney, "Adam Brown – Future Imperfect," in *Slow Down Time*, Goodwin, M. Ed. Melbourne: Midjourney, Discord & Word Press, December 6, 2022
<http://slowdowntime.com/adam-brown/>

SAD BY DESIGN

Geert Lovink



PROMPT
Sad by Design

Lovink, G., Goodwin, M. & Midjourney, "Geert Lovink – Sad by Design," in *Slow Down Time*, Goodwin, M. Ed. Melbourne: Word Press, April 17, 2023,
<http://slowdowntime.com/geert-lovink/>

REALITY CHECK

Jennifer Perkin



PROMPT
How do I know if this is real?

Perkin, J., Goodwin, M. & Midjourney, "Jennifer Perkin – Reality Check," in *Slow Down Time*, Goodwin, M. Ed. Melbourne: Midjourney, Discord & Word Press, December 2, 2022
<http://slowdowntime.com/jennifer-perkin-2/>

ARCHIVE DATA

TYPE 01 – CLIMATE CRISIS

PROMPT

The future of architecture

Brown, A., Goodwin, M. & Midjourney, Edition **09-B2B** from “Adam Brown – Future Imperfect,” in *Slow Down Time*, Goodwin, M. Ed. Melbourne: Midjourney, Discord & Word Press, December 6, 2022, <http://slowdowntime.com/adam-brown/>



ARCHIVE DATA

TYPE 02 – IDENTITY CRISIS

PROMPT
Sad by design

Lovink, G., Goodwin, M. & Midjourney, "Geert Lovink – Sad by Design," in Slow Down Time, Goodwin, M. Ed. Melbourne: Word Press, April 17, 2023, <http://slowdowntime.com/geert-lovink/>



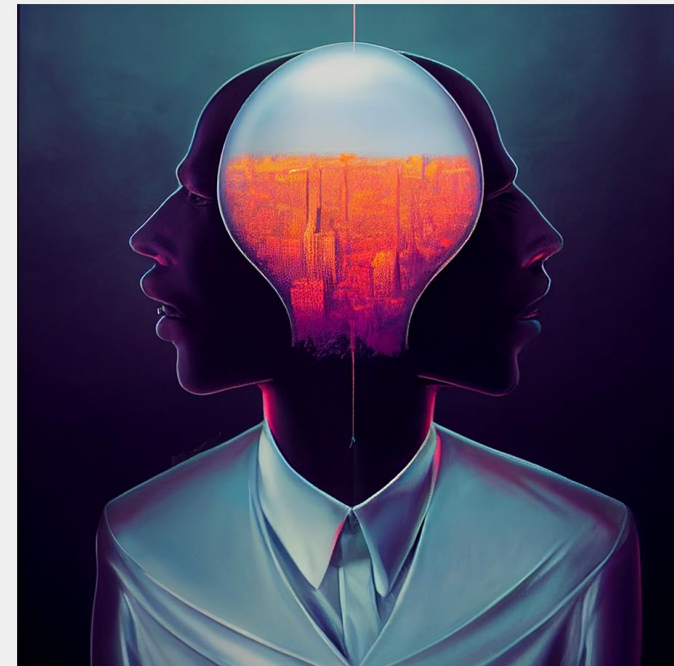
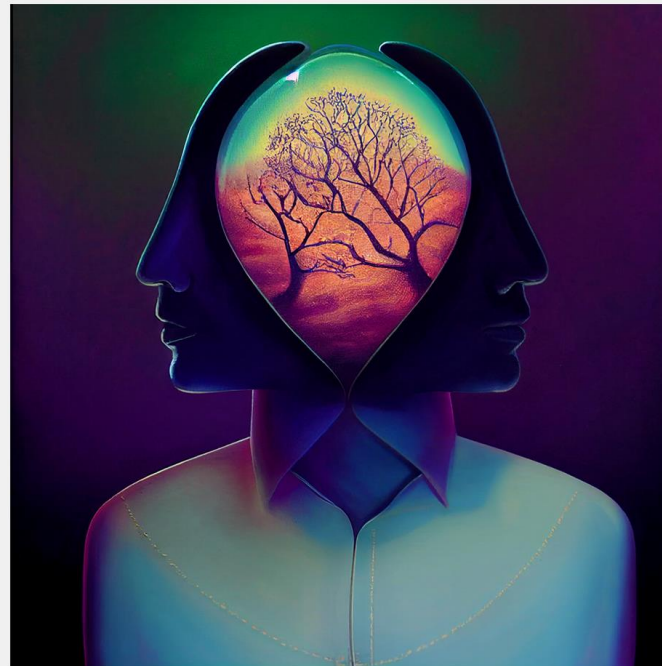
ARCHIVE DATA

TYPE 03 – META CRISIS

PROMPT

How do I know if this is real?

Perkin, J., Goodwin, M. & Midjourney, Edition 01-D2CE
from "Jennifer Perkin – Reality Check," in *Slow Down Time*, Goodwin, M. Ed.
Melbourne: Midjourney, Discord, Word Press, December 2, 2022,
<http://slowdowntime.com/jennifer-perkin-2/>



What is a face, really? Its own photo? Its make-up? Or is it a face as painted by such or such painter? That which is in front? Inside? Behind? And the rest? Doesn't everyone look at himself in his own particular way? Deformations simply do not exist.

Pablo Picasso, Mary Ann Caws, *Pablo Picasso*
(Reaktion Books, London, 2005)



Perkin, J., Goodwin, M. & Midjourney, Edition **01-D2CE**
from "Jennifer Perkin – Reality Check," in *Slow Down Time*, Goodwin, M. Ed.
Melbourne: Midjourney, Discord, Word Press, December 2, 2022,
<http://slowdowntime.com/jennifer-perkin-2/>

CONTESTED TERRITORY



Joanna Zylińska



Tristan Harris



danah boyd



Edward Snowden



Virginia Eubanks



Shoshana Zuboff



Trevor Paglen



Joy Buolamwini



EMBEDDED BIAS

Embedded inequality and prejudices within training data and the generative output – such as the depiction of racial, gender and cultural stereotypes

WORKER SAFETY

The psychological cost of moderating training data and the filtering of violent, abusive and explicit content.

WORKER RIGHTS

The exploitation of vulnerable workers in the labelling and vetting of text-image pairs

DIGITAL RIGHTS

The unsolicited acquisition of copyrighted work by living artists for training data and in the output of generative processes (including concept, style and technique)

ENVIRONMENTAL

The server energy required to perform algorithmic calculations / the mining of rare minerals to construct chips and components ...

AT WHAT COST GEN-AI?



Clockwise from Top Left: Editions 24-A2B & 20-A1, "ID" (W. Aayeshah); Edition 10-A4CD "El Agua" (R. Posse); Editions 66-A3 & 05-A1C "The Cliff" (J. Latimore)



ARTS & HUMANITIES

An opportunity exists for greater integration between arts & tech.

Concerns however, around the efficacy of AI in scholarship and teaching in HASS disciplines tick

AI COMPANIONS

Augmented learning / AutoGEN buddies / GPT assistants

These pose risks of relationship dependency, social isolation, devaluing degree programs and a retreat from campus

THE SYNTHETIC CORPUS

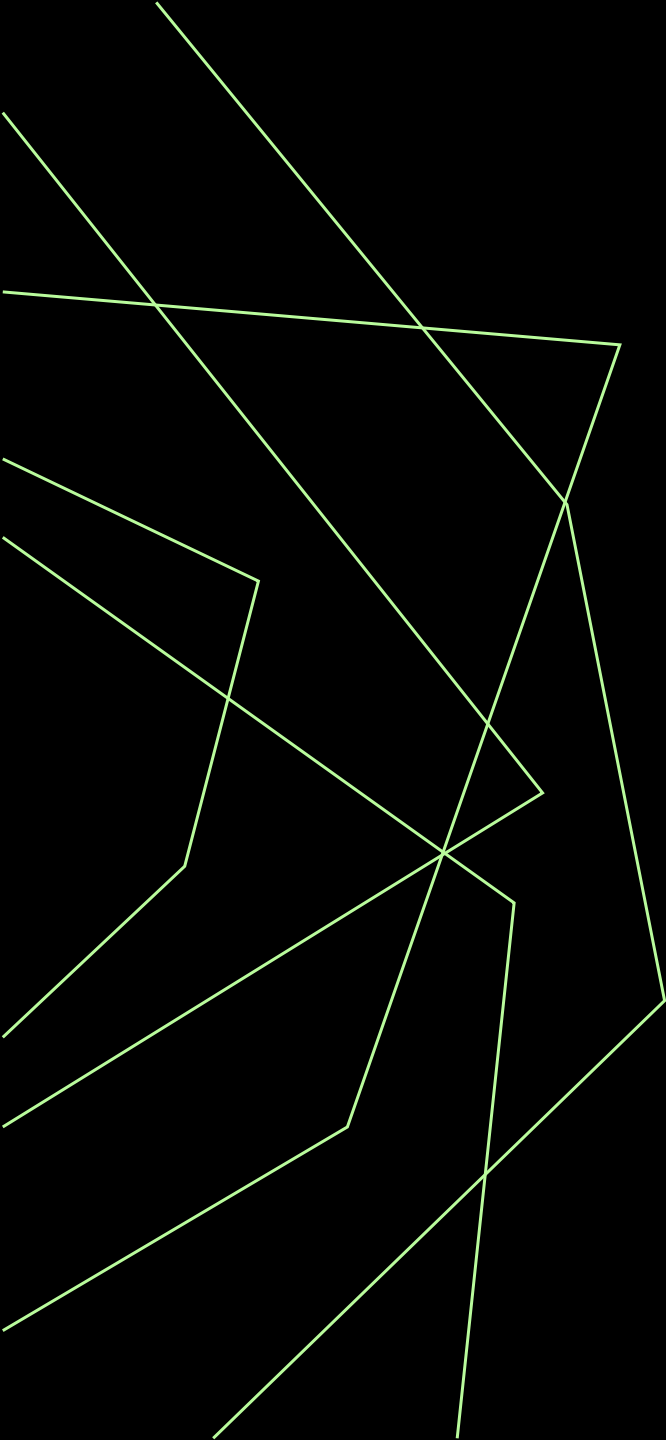
The recirculation of hallucinations, biased data, fictitious citations and disinformation poses a very real threat to research practices and knowledge discovery

INTERDISCIPLINARY DISCOURSE

GEN-AI makes disciplinary discourse legible from the outside enabling new collaborations and insights for research clusters and crucially at the undergraduate level

(PART-TIME) WORK FUTURES

Human-machine relationships and systems thinking. Experiential learning fosters growth and creative thinking. Lifelong learning via micro-credentials and “retreats”.



SLOWDOWNTIME.COM

MITCH GOODWIN

+61 421 181 400

oldmateo@gmail.com

<http://mitch.art>

*Time is the human intervention
within hyper-machine performance*

